

GWT-1.3-360360ALMC-01

Ver:10

TFT (Thin-Film-Transistor) Color Liquid Crystal Display Module

GW-	Global Wisdom Display
T-	TFT Module
1.3	1.3" Diagonal
360360	360xRGBx360 pixels
A-	Categories of models
L-	Low Temperature Poly Silicon TFT's LTPS
M-	Transmissive/Normal Back
C-	With CTP
01	Detail Number
	RoHS Compliant

Global Wisdom Display Co., Ltd

www.globalwisdomdisplay.com www.gwdeshop.com

Business services: GWDsales@globalwisdomdisplay.com

Technical service: GWDtech@globalwisdomdisplay.com

Never stop production, stock for sale, support small quantity, full of wide products range

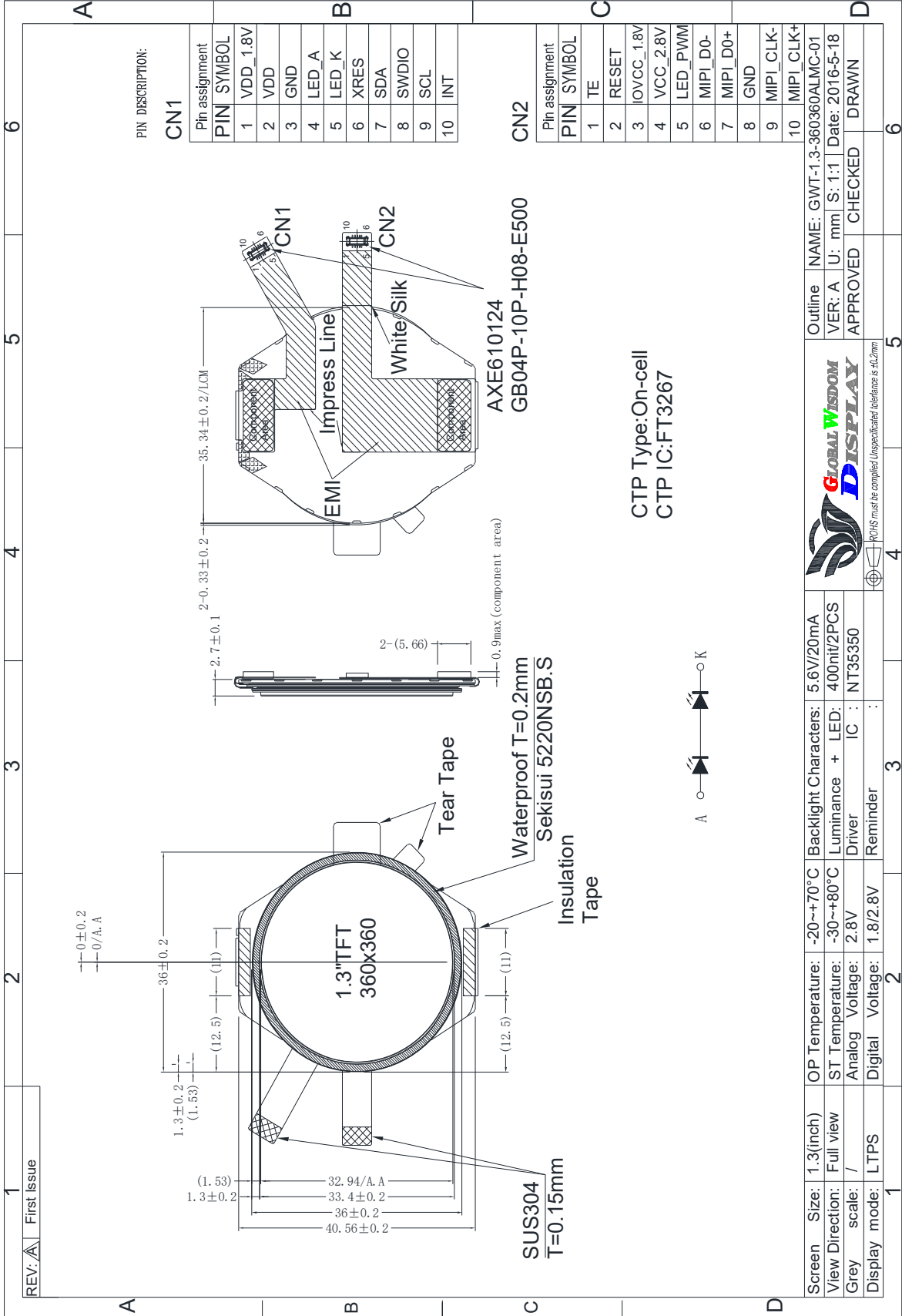
Revision History

Revision	Date	Originator	Detail	Remarks
10	2016.05.18	Mary.liu	Initial Release	

1. Module General Parameter

Features	Details	Unit
Display Size (Diagonal)	1.3"	
LCD type	LTFS TFT	
Display Mode	Normally BLACK /Transmissive	
Resolution	360 RGB x 360	Pixels
View Direction	Full view	Best Image
Gray Scale Inversion Direction	/	
Module Outline	36(H) x 50.56(V) x 2.7 (T)	mm
Active Area	32.94 (H) x32.94(V)	mm
Pixel Size	91.5(H) x 91.5(V)	um
Pixel Arrangement	R.G.B. Vertical Stripe	
Polarizer Surface Treatment	Glare	
Display Colors	16.7M	
Interface	MIPI-interface	
Driver IC	NT35350	-
With or Without Touch Panel	ON-CELL	
Operating Temperature	-20~70	°C
Storage Temperature	-30~80	°C
Weight	TBD	g

2. Outline Drawing



PIN DESCRIPTION:

PIN	SYMBOL	Pin assignment
1	VDD_1.8V	
2	VDD	
3	GND	
4	LED_A	
5	LED_K	
6	XRES	
7	SDA	
8	SWDIO	
9	SCL	
10	INT	

CN2

PIN	SYMBOL	Pin assignment
1	TE	
2	RESET	
3	IOVCC_1.8V	
4	VCC_2.8V	
5	LED_PWM	
6	MIPI_D0-	
7	MIPI_D0+	
8	GND	
9	MIPI_CLK-	
10	MIPI_CLK+	

Outline NAME:	GWT-1.3-360360ALMC-01
VER: A	U: mm S: 1:1 Date: 2016-5-18
APPROVED	CHECKED
DRAWN	



ROHS must be completed. Unspecified tolerance is ±0.2mm.

Screen Size:	1.3(inch)	OP Temperature:	-20~+70°C	Backlight Characters:	5.6V/20mA
View Direction:	Full view	ST Temperature:	-30~+80°C	Luminance + LED:	400nit/2PCS
Grey scale:	/	Analog Voltage:	2.8V	Driver IC :	NT35350
Display mode:	LTPS	Digital Voltage:	1.8/2.8V	Reminder :	

CTP Type: On-cell
CTP IC: FT3267

