

# **GWT-2.8-240320-ATMN-01**

## **Ver:10**

**TFT (Thin-Film-Transistor) Color Liquid Crystal Display Module**

GW-	Global Wisdom Display
T	TFT Module
2.8	2.8" Diagonal
240320	240 RGB x 320 pixels
A-	Categories of models
T-	Amorphous silicon TFT's TN/ Anti -Glare
M-	Transmissive/Normal White
N-	Without TP
01	Detail Number
	RoHS Compliant

**Global Wisdom Display Co., Ltd**

[www.globalwisdomdisplay.com](http://www.globalwisdomdisplay.com) [www.gwdeshop.com](http://www.gwdeshop.com)

Business services: [GWDsales@globalwisdomdisplay.com](mailto:GWDsales@globalwisdomdisplay.com)

Technical service: [GWDtech@globalwisdomdisplay.com](mailto:GWDtech@globalwisdomdisplay.com)

*Never stop production, stock for sale, support small quantity, full of wide products range*

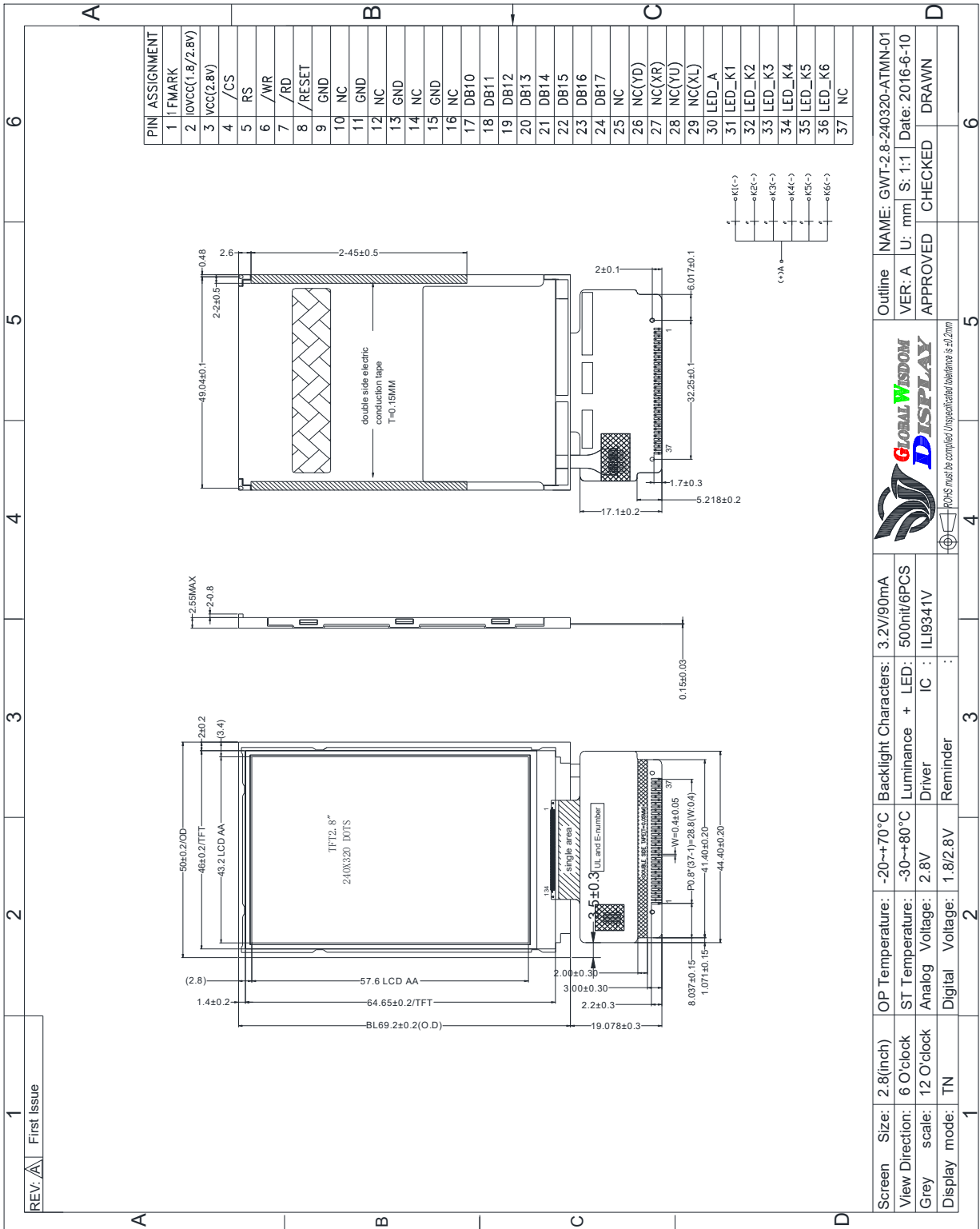
## Revision History

Revision	Date	Originator	Detail	Remarks
10	2016.06.10	Mary.liu	Initial Release	

## 1. Module General Parameter

Features	Details	Unit
Screen Size (Diagonal)	2.8"	
Panel type	TN	
Display Mode	Transmissive /Normally White	
Resolution	240RGB x 320	
View Direction (human Eye)	6 O'clock	Best Image
Module Outline	50 (H) x 69.2 (V) x 2.55 (T)	mm
Active Area	43.2(H) x57.66(V)	mm
Dot Size	0.18 (H) x 0.18 (V)	mm
Pixel Arrangement	-Strip	
Polarizer Surface Treatment	Anti-Glare	
Interface	8bit MCU interface	
Driver IC	ILI9341V	-
With or Without Touch Panel	Without	
Operating Temperature	-20~70	°C
Storage Temperature	-30~80	°C
Weight	TBD	g
Recommend connector	-	

2. Outline Drawing



Screen Size: 2.8(inch)	OP Temperature: -20~+70°C	Backlight Characters: 3.2V/90mA	Outline NAME: GWT-2.8-240320-ATMN-01
View Direction: 6 O'clock	ST Temperature: -30~+80°C	Luminance + LED: 500nit/6PCS	VER: A U: mmm S: 1:1 Date: 2016-6-10
Grey scale: 12 O'clock	Analog Voltage: 2.8V	Driver IC: ILI9341V	APPROVED CHECKED DRAWN
Display mode: TN	Digital Voltage: 1.8/2.8V	Reminder	

PCB must be completed Unspecified tolerance is ±0.2mm