

GWT-1.77-128160-ATMN-01

Ver:10

TFT (Thin-Film-Transistor) Color Liquid Crystal Display Module

GW-	Global Wisdom Display
T	TFT Module
1.77	1.77" Diagonal
128160	128 RGB x 160 pixels
A-	Categories of models
W-	Amorphous silicon TFT's TN/ Anti -Glare
M-	Transmissive/Normal White
N-	Without TP
01	Detail Number
	RoHS Compliant

Global Wisdom Display Co., Ltd

www.globalwisdomdisplay.com www.gwdeshop.com

Business services: GWDsales@globalwisdomdisplay.com

Technical service: GWDtech@globalwisdomdisplay.com

Never stop production, stock for sale, support small quantity, full of wide products range

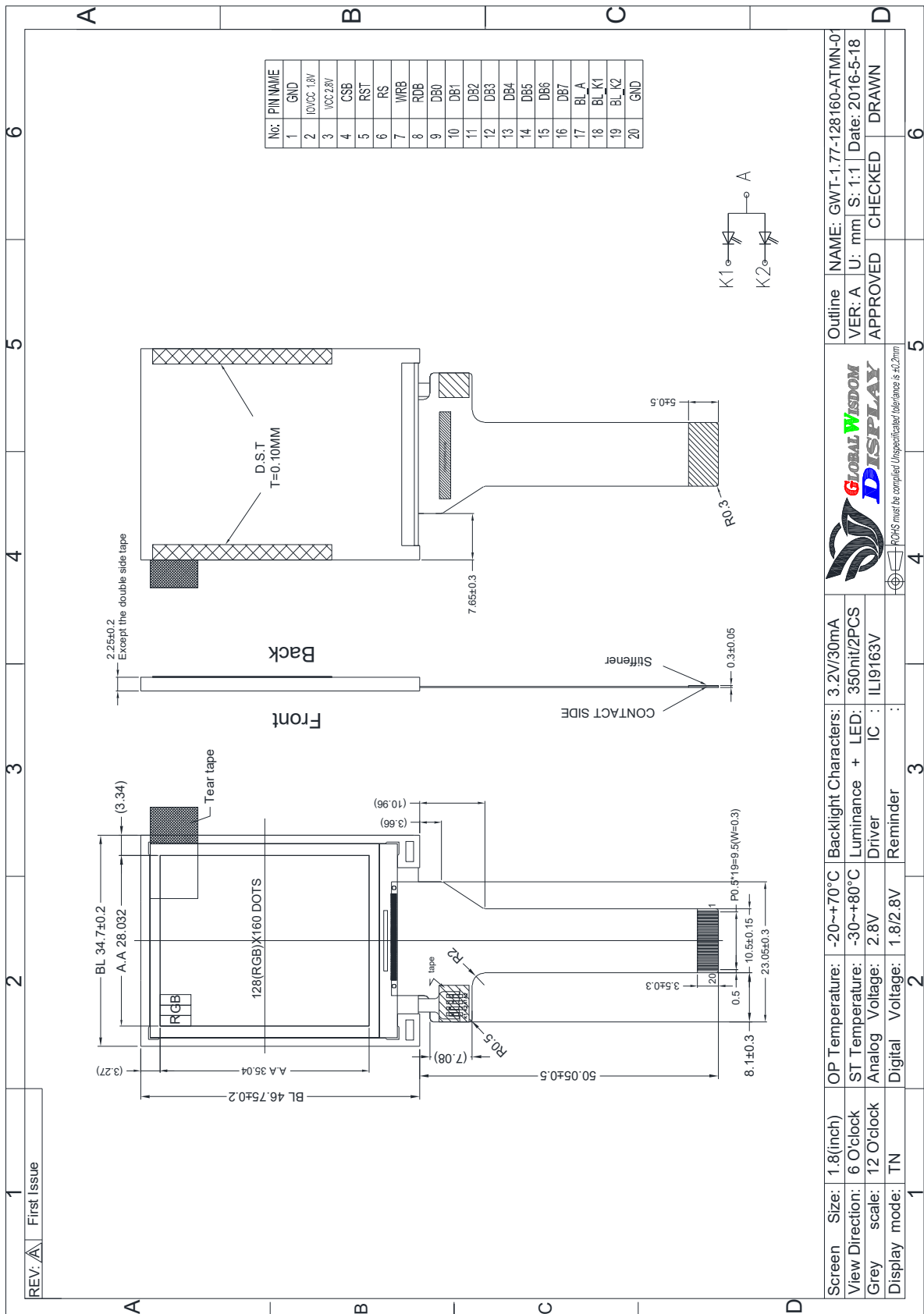
Revision History

Revision	Date	Originator	Detail	Remarks
10	2016.05.18	Mary.liu	Initial Release	

1. Module General Parameter

Features	Details	Unit
Screen Size (Diagonal)	1.77"	
Panel type	TN	
Display Mode	Transmissive /Normally White	
Resolution	128RGB x 160	
View Direction (human Eye)	6 O'clock	Best Image
Module Outline	34.7 (H) x 46.75 (V) x 2.25 (T)	mm
Active Area	28.032(H) x35.04(V)	mm
Dot Size	0.219(H) x 0.219 (V)	mm
Pixel Arrangement	-Strip	
Polarizer Surface Treatment	Anti-Glare	
Interface	8bit MCUinterface	
Driver IC	ILI9163V	-
With or Without Touch Panel	Without	
Operating Temperature	-20~70	°C
Storage Temperature	-30~80	°C
Weight	TBD	g
Recommend connector	-	

2. Outline Drawing



Screen Size: 1.8(inch)	OP Temperature: -20~+70°C	Backlight Characters: 3.2V/30mA	Outline NAME: GWT-1.77-128160-ATMN-01
View Direction: 6 O'clock	ST Temperature: -30~+80°C	Luminance + LED: 350nit/2PCS	VER: A U: mm S: 1:1 Date: 2016-5-18
Grey scale: 12 O'clock	Analog Voltage: 2.8V	Driver IC : ILI9163V	APPROVED
Display mode: TN	Digital Voltage: 1.8/2.8V	Reminder	CHECKED
			DRAWN

IPC must be complied Unspecified tolerance is ±0.2mm