

# GWT-10.1-1280800-AWMN-01

## Ver:10

TFT (Thin-Film-Transistor) Color Liquid Crystal Display Module

GW-	Global Wisdom Display
T	TFT Module
10.1	10.1" Diagonal
1280800	1280 RGB x 800 pixels
A-	Categories of models
W	Amorphous silicon TFT's IPS/ Glare
M-	Transmissive/Normal Black
N-	Without TP
01	Detail Number
	RoHS Compliant

Global Wisdom Display Co., Ltd

[www.globalwisdomdisplay.com](http://www.globalwisdomdisplay.com) [www.gwdeshop.com](http://www.gwdeshop.com)

Business services: [GWDsales@globalwisdomdisplay.com](mailto:GWDsales@globalwisdomdisplay.com)

Technical service: [GWDtech@globalwisdomdisplay.com](mailto:GWDtech@globalwisdomdisplay.com)

*Never stop production, stock for sale, support small quantity, full of wide products range*

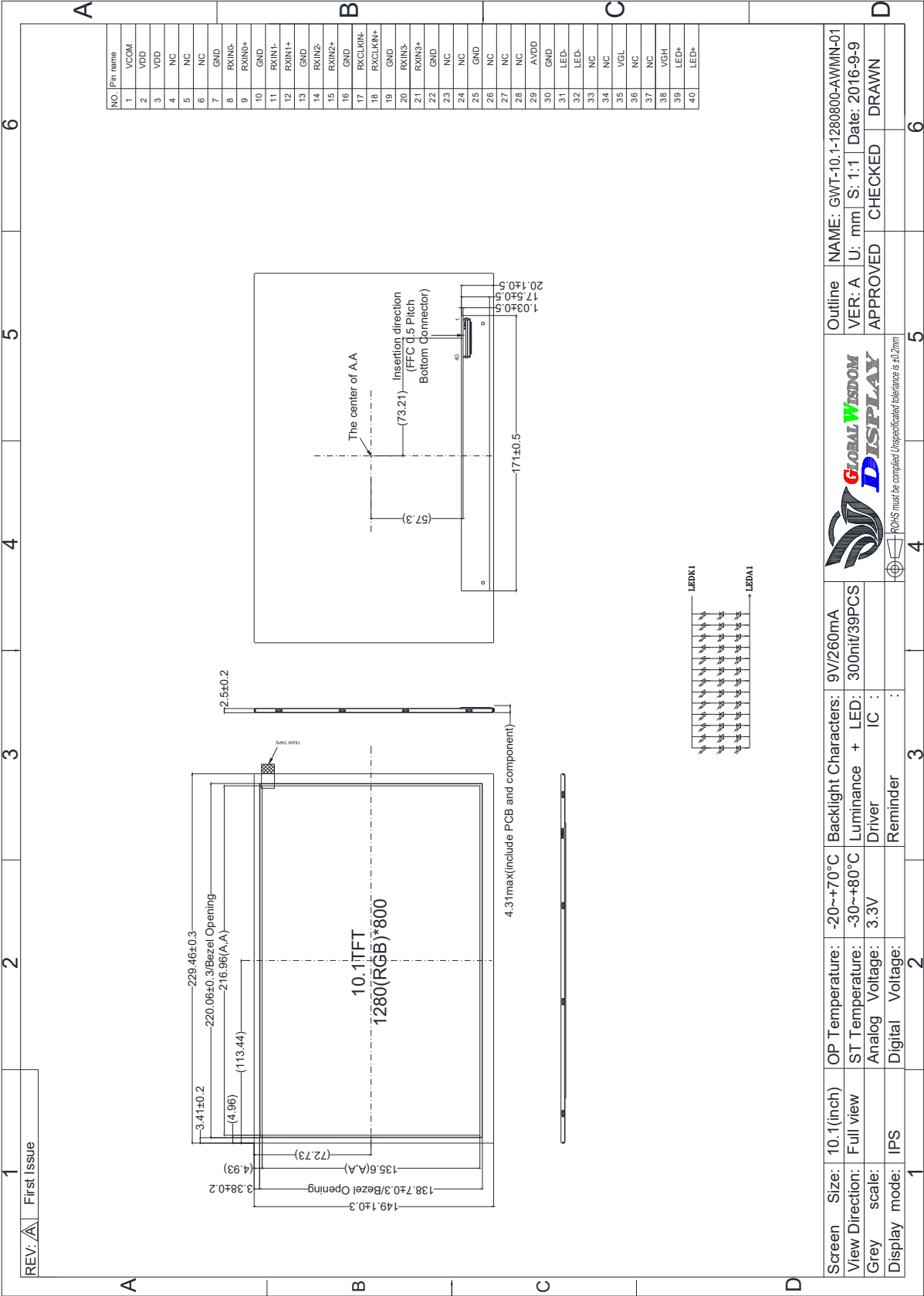
## Revision History

Revision	Date	Originator	Detail	Remarks
10	2016.09.09	Mary.liu	Initial Release	

## 1. Module General Parameter

Features	Details	Unit
Screen Size (Diagonal)	10.1"	
Panel type	IPS	
Display Mode	Transmissive /Normally Black	
Resolution	1280RGB x 800	
View Direction (human Eye)	FULL VIEW O'clock	Best Image
Module Outline	229.46 (H) x 149.1 (V) x 2.5(T)	mm
Active Area	216.95(H) x 135.6(V)	mm
Dot Size	0.1695 (H) x 0.1695 (V)	mm
Pixel Arrangement	-Strip	
Polarizer Surface Treatment	Anti-Glare	
Interface	6 or 8-bit LVDS interface	
Display color	262K or 16.7M	
Driver IC	-	-
With or Without Touch Panel	Without	
Operating Temperature	-20~70	°C
Storage Temperature	-30~80	°C
Weight	TBD	g
Recommend connector	-	

2. Outline Drawing



Outline NAME:	GWT-10.1-1280800-AWMN-01
VER:	A
U:	mm
S:	1:1
Date:	2016-9-9
APPROVED	CHECKED
DRAWN	DRAWN



Screen Size:	10.1(inch)	OP Temperature:	-20~+70°C	Backlight Characters:	9V/260mA
View Direction:	Full view	ST Temperature:	-30~+80°C	Luminance + LED:	300nit/39PCS
Grey scale:		Analog Voltage:	3.3V	Driver IC :	
Display mode:	IPS	Digital Voltage:		Reminder :	

